

Finding your passion in Public Health

Michelle Edison, MPH, MS
CEOMPH Alumni Forum
September 8, 2016

The planting of the seed

»» Good soil made it grow

Background

West side

College prep

College scholarship



Secondary education, Take 1!



West Virginia University

- BS, Exercise Physiology
- MS, Exercise Physiology, emphasis in Aquatic Therapy

The inspiration



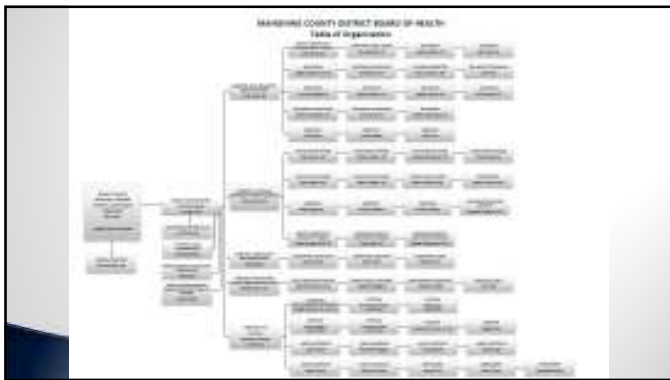
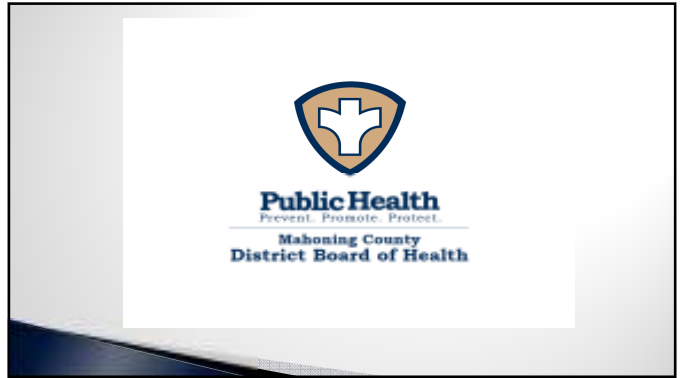
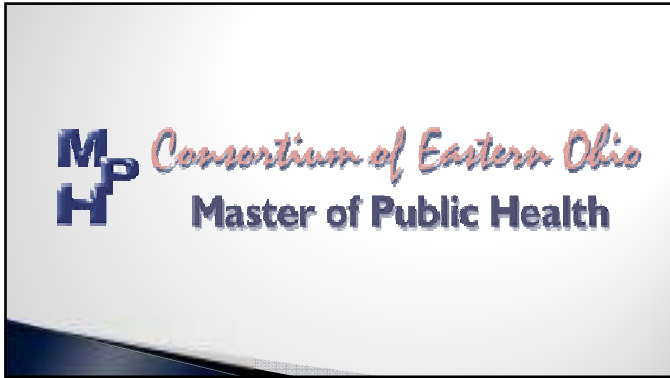
Wellness Program Coordinator



Adjunct Professor

Eureka!





(Mahoning County District Board of Health, 2015)

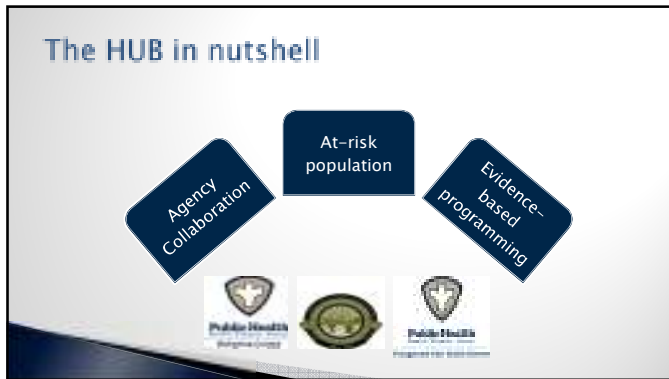


Infant Mortality Rates (IMR)

National, State, and Local Data

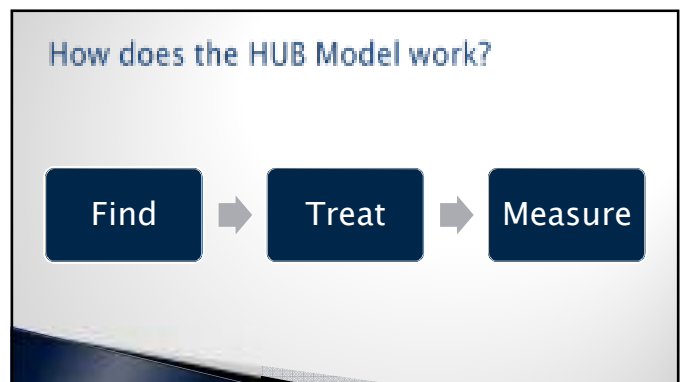
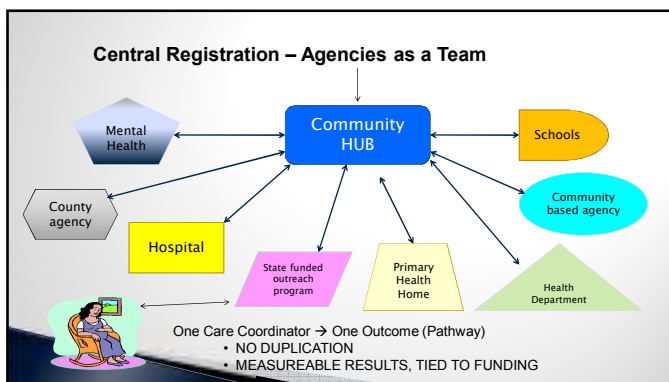
	U.S.	Ohio	Mahoning*
overall	6.0	7.4	8.3
white	5.1	6.0	5.2
black	11.2	13.8	17.7

(Mahoning County CHIP, 2015)



The Pathways Community HUB Model creates an effective way for organizations to work toward common goals.

Common Goal=Reducing Health Disparities



Mahoning County Pathways HUB

Why focus on the most at-risk?

- 5% of population uses 50% of health care resources
- Most at-risk are often the hardest to serve → no incentive to serve them.
- Access for all (insured and un-insured) has gotten worse over the past 10 years

Who could benefit from the HUB?

Those most at-risk for poor birth outcomes are

- African-American
- 12 yrs or less education
- Medicaid as a primary insurer
- Limited social support



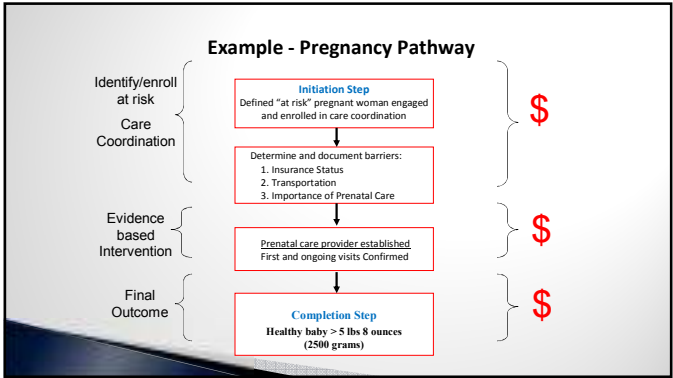
The 20 Standardized Pathways
 >> Addressing barriers, reaching goals

- Adult Education
- Behavioral Health
- Developmental Screening
- Developmental Referral
- Education

- Employment
- Family Planning
- Health Insurance
- Housing
- Immunization Screening

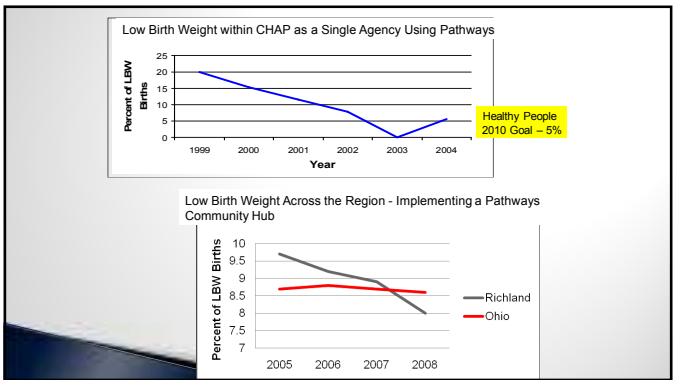
- Immunization Referral
- Lead
- Medical Home
- Medical Referral
- Medication Assessment

Medication Management
Pregnancy
Post-Partum
Smoking Cessation
Social Service Referral



Does the HUB really work?

»» Testing the theory



Core Competencies

Use basic techniques and statistical software to collect, analyze, and interpret health data.
Apply analytic reasoning and methods.
Interpret scientific and statistical results, including the strengths and limitations of scientific articles.
Explain characteristics, strengths and limitations of epidemiological study design types.
Apply behavioral health frameworks in developing community health promotion and intervention programs and applications for research settings.
Apply principles of strategic planning to public health, including continuous quality improvement, leadership, teamwork, systems thinking, and social marketing.
Assess associations found between environmental hazards and health outcomes to influence environmental policies designed to protect populations.
Apply principles of program planning, development, organization, management, and evaluation in organizational and community initiatives.
Use collaborative strategies in the design of policies, interventions, and programs.
Communicate public health information to lay and professional audiences, using appropriate strategies and technologies and with linguistic and cultural proficiency.
Demonstrate ability to use credible evidence and tolerance to guide well-reasoned decisions, proposals, and actions.
Use individual, team and organizational learning opportunities for personal and professional development.

Generalist Competencies

Prepare proposals for funding from external sources.
Demonstrate the ability to design, implement and evaluate a research protocol.
Consider the role of cultural and social factors in the planning and delivery of public health services and interventions.
Demonstrate critical evaluation of ethical values, theories, and principles that guide public health inquiry and decision-making.
Analyze the public health information infrastructure used to collect, organize, maintain, and disseminate data in order to allow for decision-making at an administrative level.
Apply theory and evidence-based communication principles adapted to different contexts.
Explain how biological, chemical, and physical agents affect human health.

